

Hardel presents an exciting new residential community offering contemporary living in Unley, one of Adelaide's most prestigious suburbs.

Choose from a carefully considered mix of contemporary townhouses and apartments. See the reverse of this leaflet for indicative floor plans of available townhouses.

Ask about the options still available to suit individual styles of quality living or register your interest for our flagship three storey **Town Homes**.

For enquiries please contact our Sales Manager,

Mark Conway 0409 933 518

or visit our website www.hardel.com.au



“60 on Charles” Stage 1
10 x 2 storey townhouses
Sold Out

“Charles Place” Stage 1
10 x 2 storey townhouses
Sold Out

“60 on Charles” Stage 2
7 x 2 storey townhouses
Sold Out

“Charles Place” Stage 2
Townhouses
Presales Available
8x 2 storey townhouses
2 bedroom plus open study or
3rd bedroom
Priced from \$425,000
Completion - Mid 2007

“Charles Place” Stage 3
Apartments
Presales Available
6 apartments
2 bedroom
Priced from \$385,000
Completion January 2008

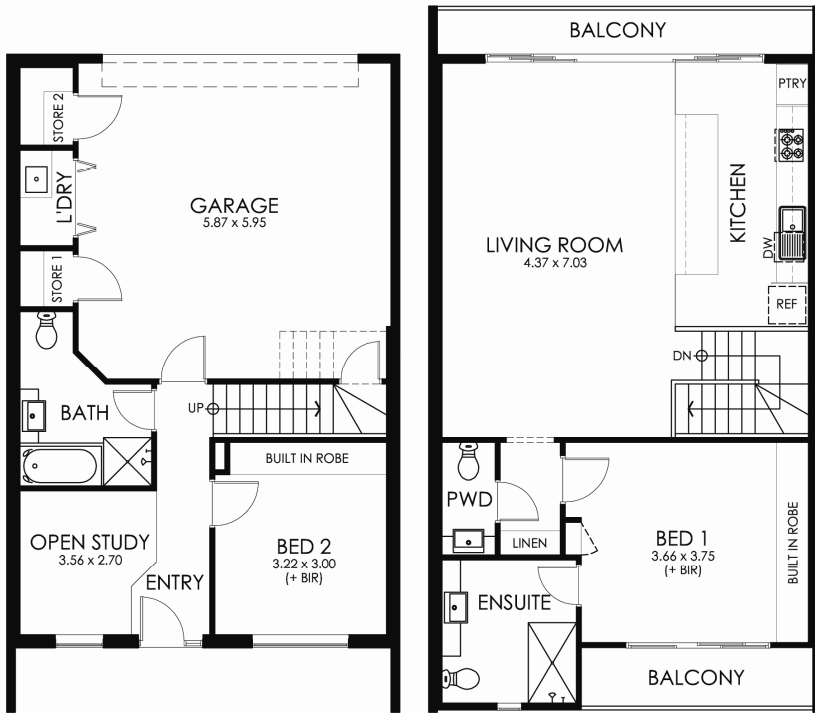
“Charles Place” Stage 3
Town Homes
Registrations of Interest
3 x 3 storey Town Homes
Our ultimate product offering
expansive living areas and city
Skyline views
Completion January 2008



Charles Place
Unley



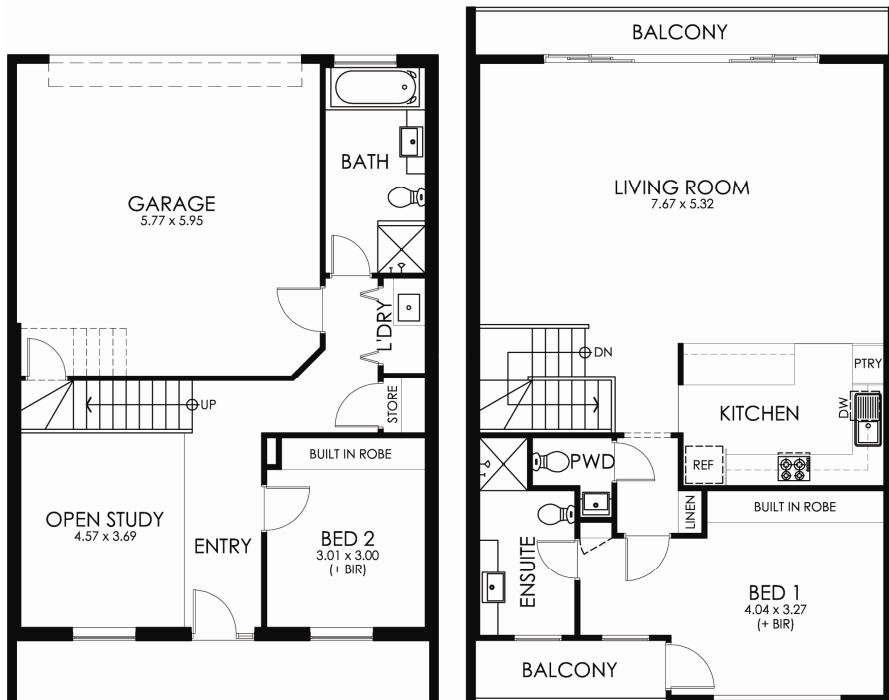
T o w n h o u s e s



GROUND FLOOR PLAN

FIRST FLOOR PLAN

Townhouse A
Only 5 Available



GROUND FLOOR PLAN

FIRST FLOOR PLAN

Townhouse B
Only 3 Available

**Completion
 mid 2007**

**Priced from
 \$425,000**

Only 8 available

**2 storey
 2 bedroom + study**

- Modern design
- Open plan living
- Contemporary finishes
- North facing living & balcony
- Air conditioning on both levels
- European appliances
- Double garage
- Storage
- Built-in robes
- Ensuite
- Bathroom plus powder room
- Study or optional 3rd bedroom



Disclaimer:

"All responsible care has been taken in the preparation of these brochures. The information herein does not form any Contract of Sale. The vendor reserves the right to vary or alter any details, dimensions and /or sizes of allotments or residences prior to signing of contracts."